

Switching current transformer

Model: SCT-019 Series

Characteristics: Opening size: 19mm×19mm
 Compatible to foreign like products completely
 Output voltage 0.333V (Voltage output type)
 Precision ±1% (10%—130% rated input current)
 Epoxy potting
 2m leading wire

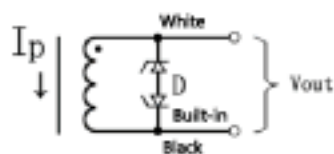
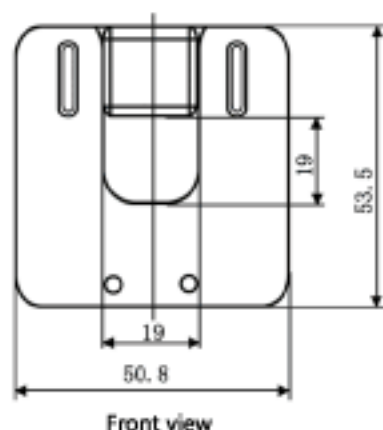
Purpose: Suitable for the current measuring
 monitoring and protection of AC motor
 lighting equipment air compressor and so on

Core material: metallic-membrane plating alloy

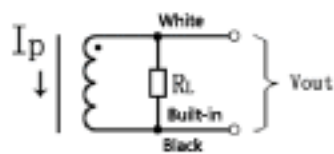
Safety index: Dielectric strength 3000V/1min

Working temperature: -25°C—+70°C

Outline size diagram: (in mm)



Voltage output type



Current output type

Table of technical parameters:

Model	SCT-019-000	SCT-019-005	SCT-019-010	SCT-019-015	SCT-019-020
Input current	0-200A	5A	10A	15A	20A
Output mode	Current/33mA	Voltage/0.33V	Voltage/0.33V	Voltage/0.33V	Voltage/0.33V
Model	SCT-019-025	SCT-019-030	SCT-019-050	SCT-019-060	SCT-019-070
Input current	25A	30A	50A	60A	70A
Output mode	Voltage/0.33V	Voltage/0.33V	Voltage/0.33V	Voltage/0.33V	Voltage/0.33V
Model	SCT-019-100	SCT-019-150	SCT-019-200		
Input current	100A	150A	200A		
Output mode	Voltage/0.33V	Voltage/0.33V	Voltage/0.33V		

Output mode: Voltage output type built-in sampling resistor; Current output type built-in protective diode;
 Forbidden to be opening operating for current type.